



STRATEGIES FOR WALK TO INTERVENTION

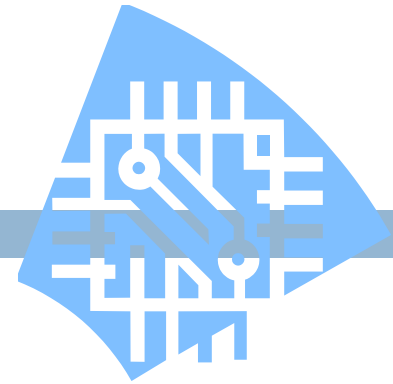
Amy Chapman, Mandy Pociask and Elizabeth Penn

Groupings

- ❑ CBM Distribution List
- ❑ Teacher Input
- ❑ Mobymax
- ❑ Wraps
- ❑ Literacy by Design
- ❑ ISAT Data
- ❑ Excel Log



Excel Log



Adamson, James	Sterbenz	round 1	Round 2
Akers, Thomas	Penn	Vocab	CC
Aldrin Edwin	Foszcz	25	25
Allen, Andrew	Chapman	25	25
Allen, Joe	Bashonski	Vocab	CC
Anders, William	Penn	Novel 1	Novel 2
Apt, Jerome	Chapman	Novel 2	Novel 1
Armstrong, Neil	Foszcz	Vocab	CC
Ashby, Jeff	Carbine	25	25
Bagian, James	Sterbenz	Fluency	Vocab
Baker, Ellen	Carbine	CC	Vocab

Duration



- 4 days a week, 30 minutes a day
- 4 weeks/6 weeks
- Analyze Data once per month



Below 25th Percentile



- All students receive multi-syllabic instruction
- Fluency- Repeated reading using various materials
- Writing/Retell activity- Using Expanding Expression Tool
- Comprehension check

Fluency

- Reader's Theater

A fun way to teach fluency!

Many available online.

Students practice, practice, practice- then perform for the class!

- 6 minute solution



Comprehension

- Susan Hall Blueprint for Reading Comprehension
- QAR
- Ready Common Core
- Test Taking Strategies-PIRATE
- Reading A-Z
- Read and Succeed Comprehension
- Reading Works

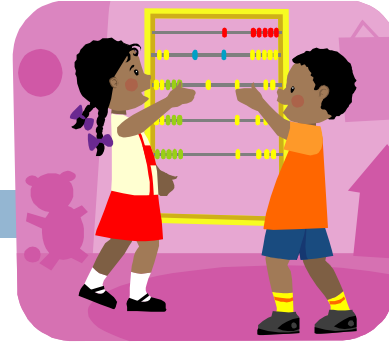


Enrichment

- Novel Studies
- PBL
- Analogies
- Figurative language



Math Interventions



MobyMax

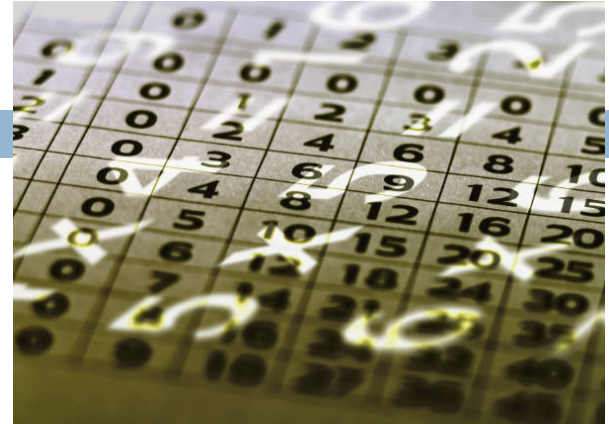
□ Used as Tier 2 and 3- Depending on Student



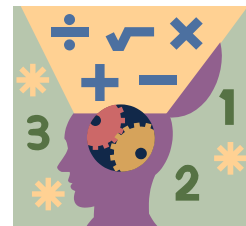
- Students work at their own pace on deficit skills
- Usually split time between facts and skills
- Thursday- last 5 minutes is reward day
- Assess skills monthly to check for progress

Fact Fluency

- Rocket Math
- XtraMath
- MobyMax
- Flashcards
- Teacher Creativity
- University of Kansas Math Strategies



Problem Solving



- ☐ Ready Common Core
- ☐ PARCC Practice
- ☐ ISAT Prep
- ☐ Teachers Pay Teachers

Enrichment Group

- 6th Grade Common Core
- Problem-Solving
- Math Olympiad



Changing Groups



- Analyze classroom and AIMS

Web data monthly

-If a student isn't responding to the intervention-
Make our group smaller, move student to tier 3 or
change the intervention

Resources

- Newsela; <https://newsela.com>
- ReadWorks: www.readworks.org/
- MobyMax: www.mobymax.com
- XtraMath: <https://xtramath.org/>

Questions

Thank you for coming to our presentation! If you have additional questions, please feel free to e-mail us.

- ▣ achapman@d15.org
- ▣ epenn@d15.org
- ▣ apociask@d15.org